

Aldridge Piling Equipment



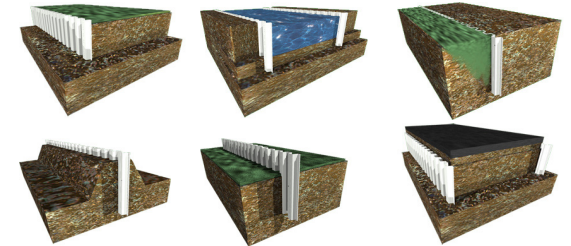
APE Plastic Piling

Tel 01543 277680

Fax 01543 270090

Email info@miniape.com

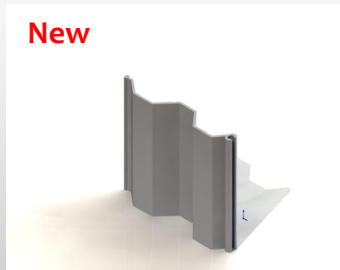
www.miniape.com



APE's range now includes the New Ultra U, heavy duty plastic piles

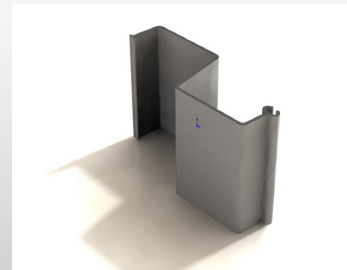
APE Plastic Piling are proud to present the most outstanding range of traditional plastic sheet piles. Nowhere else in the world will you find a range that includes PVC, HDPE, Polyurethane, Polyester in U piles, Z Piles, Trench Piles, with a whole host of interlock designs curly, ball and socket, I beam, even Larssen!

Whatever your requirement, from the economy of the EcoZ or Masterpile, the water tightness of the Europile or Environ PE, to the structural composites and Ultra Z; APE has the products for you.



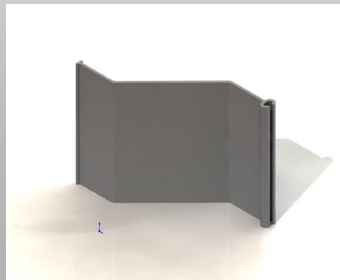
The Trench Pile—Recycled PVC

This new introduction is aimed at the utility market, where a shoring shield with a narrow depth (30mm) is required. The narrow 200mm width proving extremely useful when cross services are present as this minimises gaps in the wall support. The design permits the use of a wedge for connection to the piling frame.



The Europile —Recycled PVC

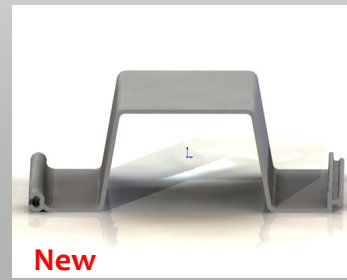
Despite classification as a traditional plastic pile this is a next generation design, that provides a more advanced alternative to the EcoZ, provides the coverage of the Z rib, with the strength of the Box rib. It is a thicker sheet and designed for impact driving. The Interlocking direction faces the load to ensure one of the best water sealing products of our range.



The Eco Z—Recycled PVC

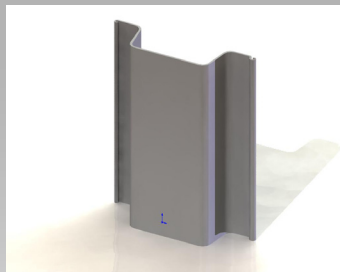
This product has been introduced for two reasons, it is an established profile and quite frankly cheap. That stated this new design has stronger, more water tight interlocks.

This type of product can be installed as a Z rib or box rib orientation. The former maximises coverage, whilst the latter strength.



The Ultra U—Recycled PVC

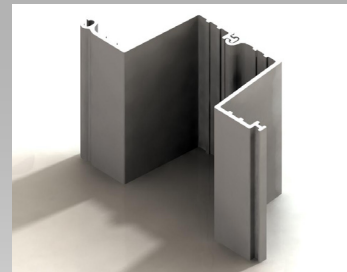
A brand new heavy duty U piles, for those users more familiar with this profile design. Ideally suited to revetments and bank stabilisation. This will undoubtedly become one of APE biggest sellers.



The MasterPile—Recycled PVC

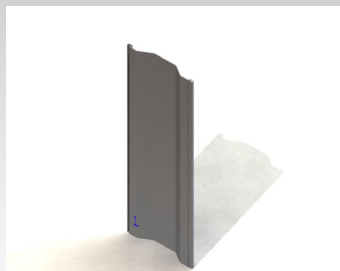
This is a full pan pile, so again targeted towards shoring application. It is produced in the UK by the company that introduced the very first Bankmaster pile into the UK.

This product has relatively low strength, and is the only pile of this range that has a trench sheet clutch.



The Ultra Z—Recycled PVC

Who says a PVC pile cannot be structural? This product provide a similar bending moment to the Industry standard M11 steel trench sheet. Extra strong interlocking, ribbed thick plastic. This is an exceptional new product from Pietrucha.



The Environ PE—Virgin HDPE

Not a structural pile, designed for water and chemical cut-offs. The only pile worldwide to be made from HDPE, and so offers a chemical resistance that exceeds even the composites.

The product has relatively low strength, but in another world first has the Larssen Interlock for extreme water tightness.



The Superloc Series FRP Composite

Available in Polyester or a Polyurethane this is truly engineered material with extremely high bending moments comparable to HD Steel Trench Sheeting, this product has increase rigidity, chemical resistance and high water tightness. A structural version of the Environ PE!